

XMP: Manometer for indicating measured values

For displaying measured values in the same units as the measured variable; suitable for fitting into the RCP controllers or (using accessories) in various other controllers, relays or panels. Conforms to the regulations on pressure equipment (97/23/EG Art. 3.3).

Housing with measuring system and scale with plexiglass cover; adjustable pointer; connections with G 1/8 A thread or push-on connector of Ø 2.3 mm.



T03074



Y03334

Type	Scale range	Rough scale	Use	Weight [kg]
XMP 020/40 F001	-20...40 °C	0.2...1.0 bar	temperature	0.05
XMP 5/35T F001	5...35 °C	0.2...1.0 bar	temperature	0.05
XMP 0/120T F001	0...120 °C	0.2...1.0 bar	temperature	0.05
XMP 80/200 F001	80...200 °C	0.2...1.0 bar	temperature	0.05
XMP 20/90F F001	20...90 %rH	0.2...1.0 bar	rel. humidity	0.05
XMP 0/20AF F002	0...20 g/kg	0.2...1.0 bar	abs. humidity	0.05
XMP 0/5ND F001	0...5,0 mbar	0.2...1.0 bar	low pressure	0.05
XMP 5/10ND F001	5...10 mbar	0.2...1.0 bar	low pressure	0.05
XMP 0/100E F001	0...100%	0.2...1.0 bar	standard signal	0.05
XMP 0/16B F001	0...1.6 bar	-	output pressure	0.05
XMP 50/50P F001	-50...50 Pa ¹⁾	-	low pressure	0.05
Accuracy	Class 1.6	Permissible ambient temp.	0...55 °C	
Max. operating pressure XMP 0/16B	1.6 bar	Dimension drawing	M297045	

Accessories

- 0226584 000 Scales for indicating the volume flow; block of 25 labels
- 0297044 000* Accessories for panel fitting
- 0226561 ... 566 Scales for indicating the position of the valve; block of 25 labels
- 0226569 000 Universal scales, gradation 120, 50/100, 30/60, 80/160, $\dot{V} = \sqrt{\Delta p}$, block of 25 labels

*) Dimension drawing or wiring diagram are available under the same number

1) Pressure gauge for RLP 100 F901/F915 room-pressure controller; indication of room press. Double scale: -20...+20/-50...+50 Pa = 0.2...1.0 bar. The range can be selected by ticking one of two boxes on the scale.

226561 Full range			226562 Partial ranges 1/2-1/2 and 1/2			226563 Partial ranges 1/3-2/3		
226564 Partial ranges 1/3, 1/2, 2/3			226565 Partial ranges 1/3-1/3-1/3, 1/4-1/4-1/2			226566 Partial ranges 1/4		

B03331a

226569 Universal scales for self-inscription

120	50/100	30/60	80/160	$\dot{V} = \sqrt{\Delta p}$

B03332

226584

% \dot{V}

B03333

Operation

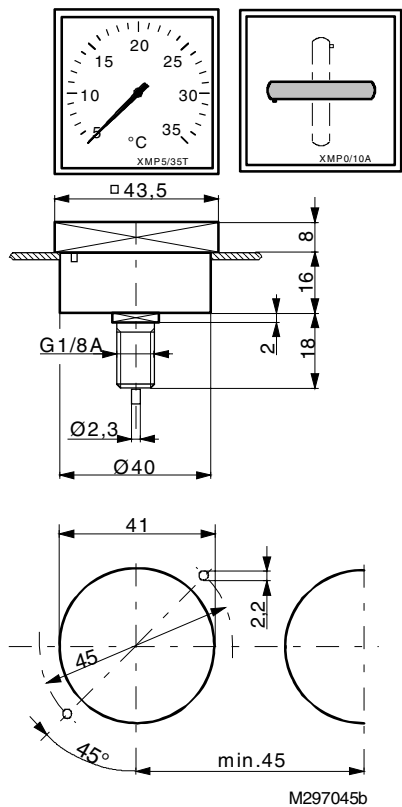
A Bourdon tube is pressurised, and the pressure is converted into a change of direction which is indicated by a pointer on the scale.

The XMP 0/10 A has a black bar for indicating the valve position etc. in mimetic diagrams.

Technical information

Technical manual: *centair* system 304991 003

Dimension drawing



Accessories

297044

