

EGT 330...335: Room-temperature sensor

For measuring the room temperature in dry rooms for heating and air-conditioning systems. Housing 76 × 76 mm; of pure white (RAL 9010), flame-resistant thermoplastic; snaps on to black baseplate. Nickel thin-film sensor as per DIN 43760. Connection terminals 2 × 1.5 mm². Cable inlet at rear.

Type	Nominal value at 0 °C	Adjuster	Remarks	Measuring range [°C]	Weight [kg]
EGT 330 F021	200 Ω	–	–	–20...60	0.1
EGT 330 F051	500 Ω	–	–	–20...60	0.1
EGT 330 F101	1000 Ω	–	–	–20...60	0.1
EGT 332 F101	1000 Ω	2 kΩ	for Flexotron 2) +DDC	–20...60	0.1
EGT 333 F101	1000 Ω ¹⁾	± 4 K	for Equitherm	–20...60	0.1
With occupancy key, 3 LEDs					
EGT 335 F101	1000 Ω	2 kΩ	for DDC	–20...60	0.1
Resistance values as per Tolerance at 0 °C	DIN 43760 ± 0.4 K	Degree of protection		IP 30 (EN 60529)	
Average temp. coefficient	0.00618 K ⁻¹	Wiring diagram			
Self-heating	0.17 K/mW	EGT 330		A01632	
		EGT 332, 335		A06951	
		EGT 333		A06952	
Time behaviour in still air		Dimension drawing		M07634	
Dead time	50 s	Fitting instructions		MV 505479	
Time constant	18 min	EGT 333		MV 505530	

Accessories

- [0303124 000*](#) Recessed junction box
[0313347 001*](#) Intermediate cover plate for 76 × 76

*) Dimension drawing or wiring diagram are available under the same number

- 1) 1000 Ω when correction knob is in middle position
 2) Not for *flexotron 100*

Operation

The resistance of the nickel measuring resistor changes in relation to the temperature. The temperature coefficient is always positive, i.e. the resistance increases as the temperature rises. Table of values (DIN 43760). The elements are interchangeable within the bounds of the given tolerances.

EGT 332

In addition to the measuring resistor, a potentiometer of 2 kΩ is fitted. In conjunction with DDC or a Flexotron controller, the setpoint can be universally parameterised.

EGT 333

A potentiometer of 47 Ω for varying the measured value by ± 4 K – is fitted in series to the resistor. Depending on the connection to an Equitherm controller, the setpoint can be corrected either with or without influencing the room temperature.

EGT 335

As EGT 332, but with occupancy key and a yellow LED for operation plus two green LEDs for status for ½ and 1. Bridges BR1 and BR2 should be opened if the sensor's earth should be separated. Contacts S1 become potential-free if BR3 is opened.

Engineering and fitting notes

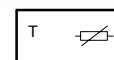
The temperature sensor should not be exposed directly to sources of heat, the effects of radiation or draughts. With a temperature difference of 5 K between wall and air at a distance of approx. 1 m, there is an error of 1 K.

Additional technical data

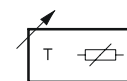
Complies with:- EMC directive 89/336/EEC	EN 61000-6-1/ EN 61000-6-2 EN 61000-6-3/ EN 61000-6-4
---	--



T10550



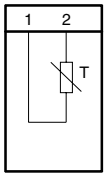
Y04579



Y01841a

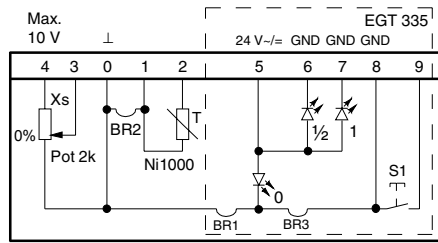
Wiring diagram

EGT 330



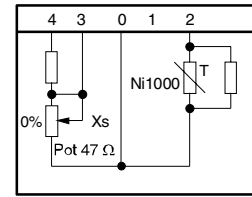
A01632

EGT 332 (EGT 335)



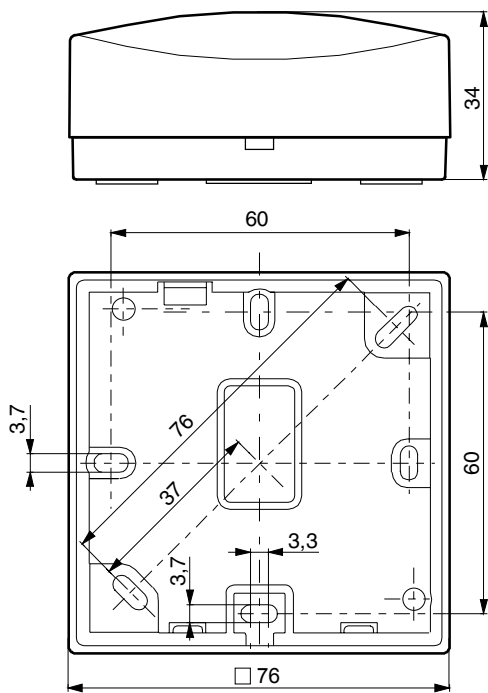
A06951b

EGT 333



A06952a

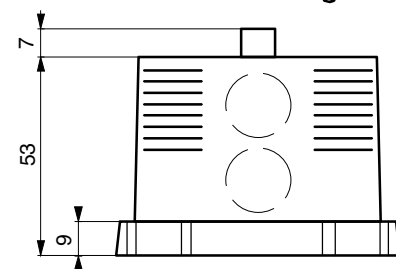
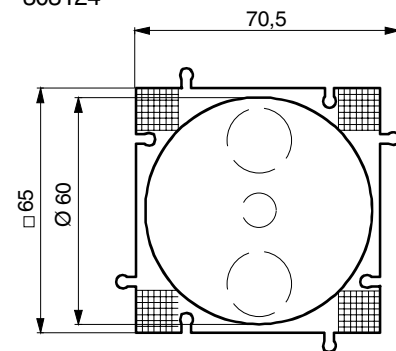
Dimension drawing



M07634b

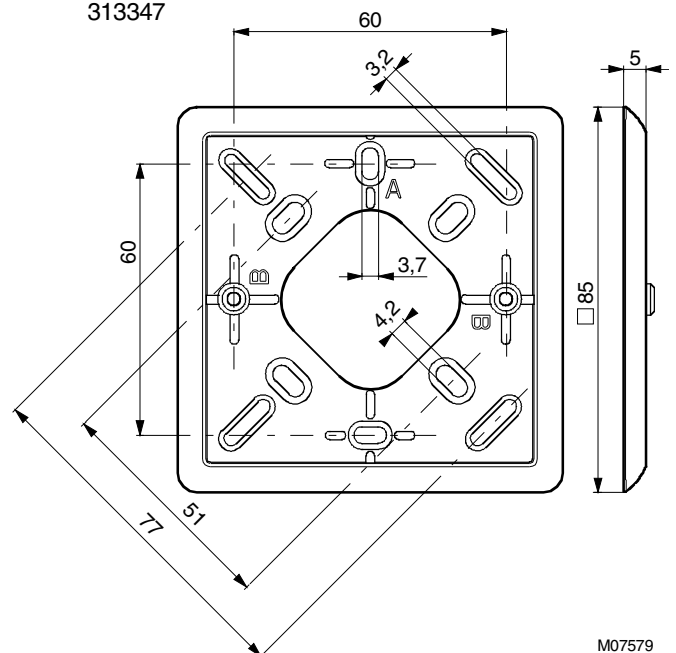
Accessories

303124



M00815

313347



M07579